

**PLAN.  
PERFORM.  
SUCCEED.**

**FIELD SOLUTIONS**



The Experts In Design-Build-Operate Solutions

## ABOUT BUILDINGPOINT

BuildingPoint is the construction industry's leading technology provider dedicated to offering customized and comprehensive solutions throughout the entire Design-Build-Operate lifecycle. With more than 70 years of combined experience in building construction and technology, BuildingPoint provides the insight, tools, software solutions, and services that forward-looking industry professionals require to grow their business and enhance their productivity.

Founded in 2014, BuildingPoint Florida is built upon the concept that great people do great work. As a result of this belief, the company has grown throughout the state of Florida to bring these comprehensive and creative solutions to the building construction industry. With headquarters in Tampa, and team members throughout the state, BuildingPoint is perfectly aligned to provide the service and support contractors would expect from the Trimble distribution network.

## ABOUT TRIMBLE BUILDINGS

Trimble Buildings, a part of Trimble's Engineering and Construction segment, is a world leader in solutions that optimize the complete Design-Build-Operate (DBO) lifecycle of buildings. Incorporating the Trimble Connect collaboration platform and spanning top brands such as SketchUp, Tekla, Gehry Technologies, Proliance, Vico Office, WinEst, Accubid, Manhattan Software, and more, Trimble's product and professional service offerings improve productivity, visibility and data interoperability, from simulation to renovation. Used in over 150 countries around the world and supported by a global dealer and distribution partner network, Trimble technology is a mainstay of the building industry. Information on Trimble Buildings' DBO portfolio is available at: <http://buildings.trimble.com>.







# THE BUILDINGPOINT DIFFERENCE

Your business is unique. So is BuildingPoint. By focusing exclusively on the building construction industry, BuildingPoint is dedicated to helping contractors and construction stakeholders succeed through the successful implementation of advanced technology. In addition to Trimble's world-class construction solutions, contractors can take advantage of a number of offerings and capabilities that are truly unique to BuildingPoint clients.

## LOCAL, CUSTOMIZED SUPPORT

When questions or unexpected challenges arise, you want a partner that can help you find the answers you're looking for. Because BuildingPoint is based in Florida, our solution and support specialists are never far away. Phone calls and emails can only go so far. Your BuildingPoint support team is dedicated to providing on-the-ground, on-demand technical support for both scheduled training and unexpected questions that can and will arise on the jobsite. This commitment greatly enhances both field and office buy-in, and greatly enhances the adoption and uptake with these exciting new technology solutions.

In addition, the BuildingPoint team has real-world industry experience. From design and pre-construction, field operations, through project controls and management, the BuildingPoint team understands your industry and your needs at a very deep level. This expertise offers a unique capability that is simply unmatched in the construction market. With decades of construction experience, BuildingPoint offers a level of professionalism and insight that will minimize the uncertainty surrounding new and emerging technologies or workflows.

## CERTIFIED TRAINING

Technology solutions are only as good as the training that is provided. Effective training and implementation is the number one priority for BuildingPoint. With Trimble Certified Trainers on staff, you can rest assured that your users will be receiving the most professional and comprehensive training available anywhere within the construction industry. More than just button presses and clicks, BuildingPoint focuses on real-world application and role-based training. This methodology ensures that users learn the important skills and insight they need to be more productive and efficient through the use of technology solutions from BuildingPoint.

# YOUR SOURCE FOR CONSTRUCTION TECHNOLOGY

Beginning at pre-visualization and design through project handover and facilities management, BuildingPoint will help you build and implement a technology roadmap that actually makes sense to your organization.

For too long, contractors and stakeholders have lacked a true construction technology partner. Technology products and solutions are often implemented slowly or insufficiently, resulting in a lack of integration throughout the entire organization. At BuildingPoint, we recognize and understand that your business is unique, and that's precisely why we provide a completely customized set of technology solutions that are able to be tailored to your specific workflow and business processes.

The best data in the world is only effective and usable if it is actionable. With BuildingPoint, you gain a partner that is dedicated to helping you leverage this data to provide real-world answers to both field and office users.



## TECHNOLOGY AS EASY AS 1,2,3.

### 1.PLAN.

The success of any project is often traced back to the planning phase. From traditional 2D cost estimating and take-offs to robust 3D cost planning and scheduling solutions, to intuitive design tools, BuildingPoint can help you build a reliable and efficient cost planning workflow.

### 2.PERFORM.

When planning switches to production, BuildingPoint offers a variety of hardware and software solutions that can enhance the oversight and management functions on projects of all shapes and sizes. By bridging the historical gap between office and field relationships, contractors can easily communicate through field-related issues on a real-time basis, drastically reducing the RFI and corrective process workflow.

### 3.SUCCEED.

While planning and execution serve as key components to a successful and profitable project, the reality of building construction is that change is constant. Adapting and adjusting to the constantly moving variables on the modern jobsite becomes increasingly important as projects become more complex and constrained. BuildingPoint understands this, and provides a team of industry veterans and technology solutions to help you make real-time decisions more effectively, enhancing your responsiveness and ability to deal with changes as they arrive.



# INTRODUCING THE TRIMBLE RAPID POSITIONING SYSTEM.

With construction workflows and processes changing and advancing every day, Trimble recognized the need to re-think the way that contractor's layout their projects and jobsites. As a result, the Trimble Rapid Positioning System was born. This rugged, easy-to-use layout station was purpose built for the building construction industry. Based upon over 35 years of construction positioning experience, the Trimble Rapid Positioning System marks the beginning of a new era in precision layout for building construction trades.

With this system, project complexity becomes irrelevant. Arcs and intricate layouts require the same amount of layout time as standard perpendicular layouts. With the Trimble Rapid Positioning System, you can finally have complete control of your layout routine.

Boasting a truly unique industrial design, the Trimble Rapid Positioning System is the result of direct and constant feedback from building trades contractors. With a compact, rugged, water resistant construction, this tool can thrive in even the harshest jobsite conditions. The remarkably accurate measurements are made possible an entirely new electronic distance measurement (EDM) assembly that also provides a highly visible green-beam laser for pinpoint accuracy and readability, even in bright environments. Also unique to the Rapid Positioning System is a truly intuitive setup routine. With only one-button press, the instrument automatically positions itself within the work area.

When combined with the industry's leading construction-focused layout software, the Rapid Positioning System represents a truly powerful and unique option for contractors looking to greatly enhance their layout accuracy and productivity.





# ONE BUTTON

## ENDLESS LAYOUT POSSIBILITIES

Traditionally, construction total stations rely on common surveying routines to set up and orient a total station within a project or jobsite. With the Trimble Rapid Positioning, this simple process has been taken a step further. The Rapid Positioning System implements the industry's first true one-button setup. Simply place the instrument within your work area, and press the power button. The unit will then automatically discern the relative location and orientation within the work area locating and measuring targets. Within minutes, and only one button press, your layout crew is ready to begin laying out. This streamlined process greatly reduces the possibility of setup errors that can lead to costly rework or changes.



## FIELD SOFTWARE THAT WORKS FOR YOU.

Trimble Field Link is the industry's most advanced field layout software designed to integrate into contractor's existing workflow. Using terms and concepts familiar to both trades and general contractors, Trimble Field Link quickly fits into existing crews and their traditional workflows. A tablet-based solution, this layout management system provides the accuracy and simplicity you need to layout your project.

Trimble Field Link is based around a simple and intuitive task-based workflow. This enables users to visualize and understand that layout work that needs to be completed. In addition to traditional layout capabilities, Trimble Field Link offers a robust reporting system, helping both field personnel and managers better understand the current state of the layout process, and offering a glimpse into upcoming challenges or deviations that could negatively impact schedule maintenance. All of this data can be seamlessly integrated and transmitted back to the office to enhance project management, or to build up historical reporting for compliance or regulatory reporting requirements.





# THE BEST KEEPS GETTING BETTER.

For over 35 years, Trimble has been leading the way in precision measuring and layout. With the building construction series of robotic total stations, Trimble continues to push the envelope, adding features and capabilities that solve challenges that contractors have been facing for years. The Trimble RTS instruments are based upon the same solid foundations that have been leveraged in not only the building construction market, but also in the surveying and heavy civil construction industries as well. This wide and varied exposure has resulted in a robotic total station that is durable, rugged, and consistent; providing remarkably accurate measurements in any variety of jobsite conditions.

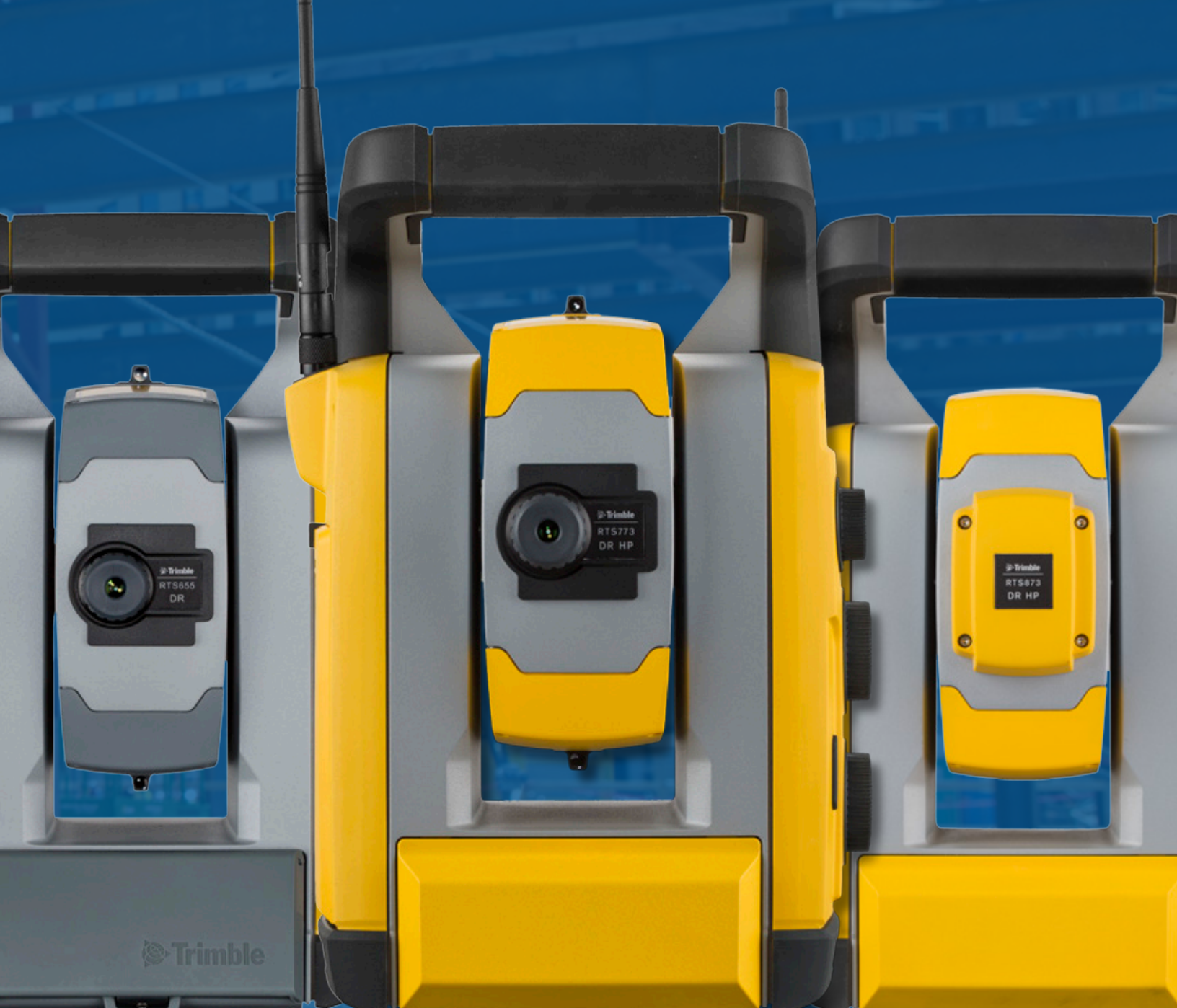
The Trimble RTS series builds upon this venerable lineage, and brings these advancements to general and trade contractors. Combined with Trimble Field Link, the RTS series offers the most compelling and easy-to-use fully featured robotic total station in the industry. From basic layout, to quality control and quality assurance, to reporting and documentation, the RTS series solutions embody everything you've come to expect from the leader in advanced construction positioning.

## SEE MORE WITH TRIMBLE VISION

Trimble Vision, available on Trimble's RPT and RTS line of instruments represents the next generation of construction layout technology. With Trimble Vision, a camera is placed inside of the total station's telescope. This camera is then accessible directly within Trimble Field Link, giving users a first-person point of view of what the instrument is seeing. With Trimble Vision, field users can also log and capture images from this camera for RFI's and field notes within Trimble Field Link, greatly enhancing the collaborative capabilities. Another powerful capability of Trimble Vision is the ability to overlay points directly on the image, creating the most accurate and revealing workflow for complex point layout applications.







## TRIMBLE RTS655

A traditional robotic total station, the Trimble RTS655 brings the reliability and accuracy of Trimble Robotic Total Stations to the construction site. Offering five second accuracy, this instrument is a fantastic option for contractors looking to get started in robotic layout or with smaller work areas.

## TRIMBLE RTS77x

The Trimble RTS77x Series builds upon the capabilities of the RTS655, with improved accuracy and the addition of Trimble Vision. Available in one and three second accuracies, the RTS77x Series has quickly become the workhorse of the building construction industry. The higher accuracy is perfectly suited for demanding as-built and quality control applications.

## TRIMBLE RTS873

Matching many of the specs found in the RTS77x Series, the Trimble RTS873 removes the eyepiece assembly and control knobs while adding an auto-focusing green laser pointer. This highly visible green laser makes laying out directly on the surface easier, even in the bright Florida sun.

## FINANCING MADE EASY.

In addition to traditional purchasing methods, BuildingPoint also offers a variety of rental and financing options for contractors looking to adaptively scale their hardware capabilities. BuildingPoint can easily create an acquisition strategy that matches your specific financial needs.



# MILLIONS OF MEASUREMENTS. ONE SOLUTION.

Few technologies have garnered the visibility or industry buzz that laser scanning has over the past several years. Laser scanning offers a number of substantial benefits to contractors and construction stakeholders including; accurate and efficient as-builts and powerful QA/QC and existing conditions documentation. Trimble's laser scanning solutions continue to propel the construction industry with new features and capabilities that were simply unthinkable even several years ago. In addition to increasing distance and fewer required station setups, the new Trimble TX8 represents the latest and most advanced laser scanner available on the market today. Capturing greater than 1,000,000 points per second the Trimble TX8 can easily scan large structures with fewer setups, making it ideal for construction projects of all shapes and sizes. When bundled with Trimble RealWorks, the Trimble TX8 offers a significant advantage for contractors looking to understand exactly what they're working with for remodels and even QA/QC applications.



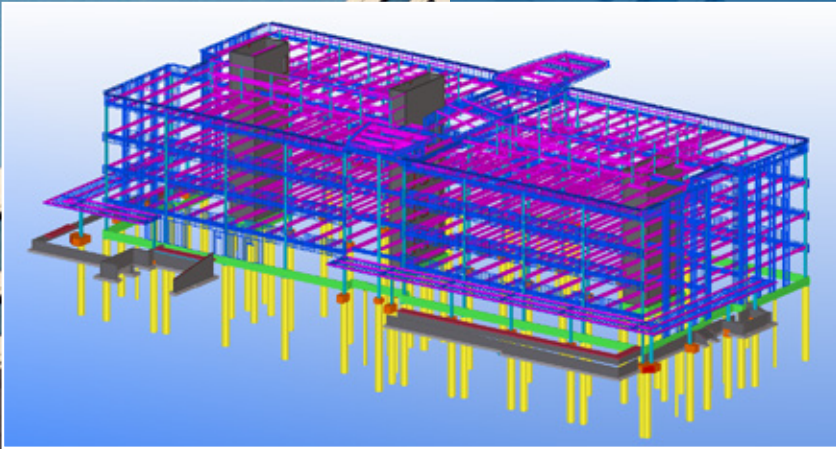


# VDC SERVICES CUSTOMIZED FOR YOU.

Beyond traditional hardware and software solutions, BuildingPoint offers a complete spectrum of virtual design services. From previsualization and constructability analysis, to point cloud modelling and trades coordination, these services can be customized to perfectly augment and complement the VDC capabilities of contractors of any size and discipline. BuildingPoint's

VDC Services offering enables contractors to enjoy a more nimble and flexible BIM workflow thanks to the tremendous scalability of the services team. Whether you're looking to implement your first BIM 3D project, or you simply require workload relief for your established BIM team, BuildingPoint's VDC services allow you to enjoy the benefits of VDC, without the traditional headaches and overhead. With over 500 projects completed to date, the services team will provide a professional and accurate deliverable that you can take to the field with confidence.

Working with an accurate 3D model is becoming an ever-more-important component of the building process. BuildingPoint offers complete Scan-To-Model capabilities through the VDC Services team. In this particular scenario, BuildingPoint can scan a structure, (entire building, specific area, or system) and convert the point cloud to a fully featured 3D model. The level of model detail is customized for each specific project, allowing the contractor complete control over what gets modeled, and what does not. Laser scanning offers a quick and cost-effective way to introduce a VDC or BIM workflow to the existing construction process.



## CONNECTING THE OFFICE & FIELD.

Bridging the historical communication gap between the field and office is one of the most exciting and powerful workflow enhancements to appear in the construction industry. Effectively leveraging Trimble's jobsite experience, BuildingPoint is able to connect your offices to your projects with a number of industry-leading technologies and solutions. These solutions increase visibility and efficiency through a more holistic and complete understanding of the current progress and status of your current projects, while also helping to build better, more accurate metrics for future business development and contract awards.







©2015 BuildingPoint Florida. All Rights Reserved.  
813-280-0655 [www.buildingpointflorida.com](http://www.buildingpointflorida.com)