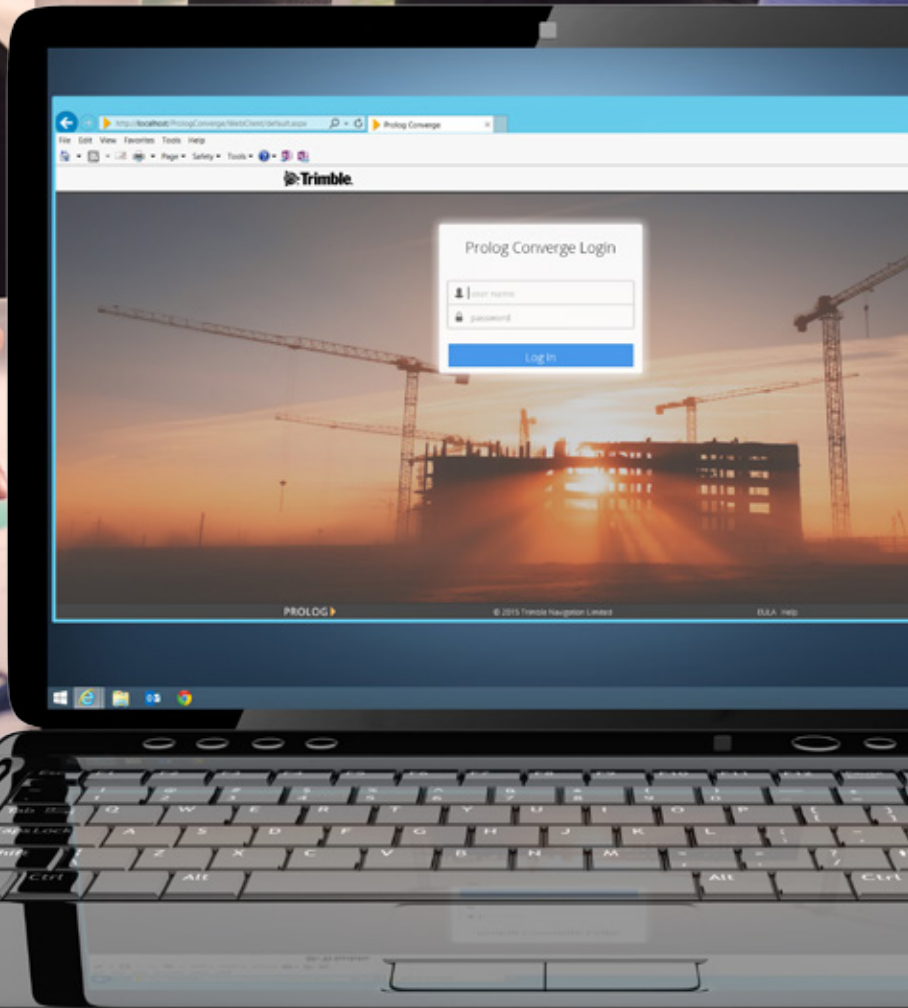


PLAN. PERFORM. SUCCEED.

OFFICE SOLUTIONS



The Experts In Design-Build-Operate Solutions

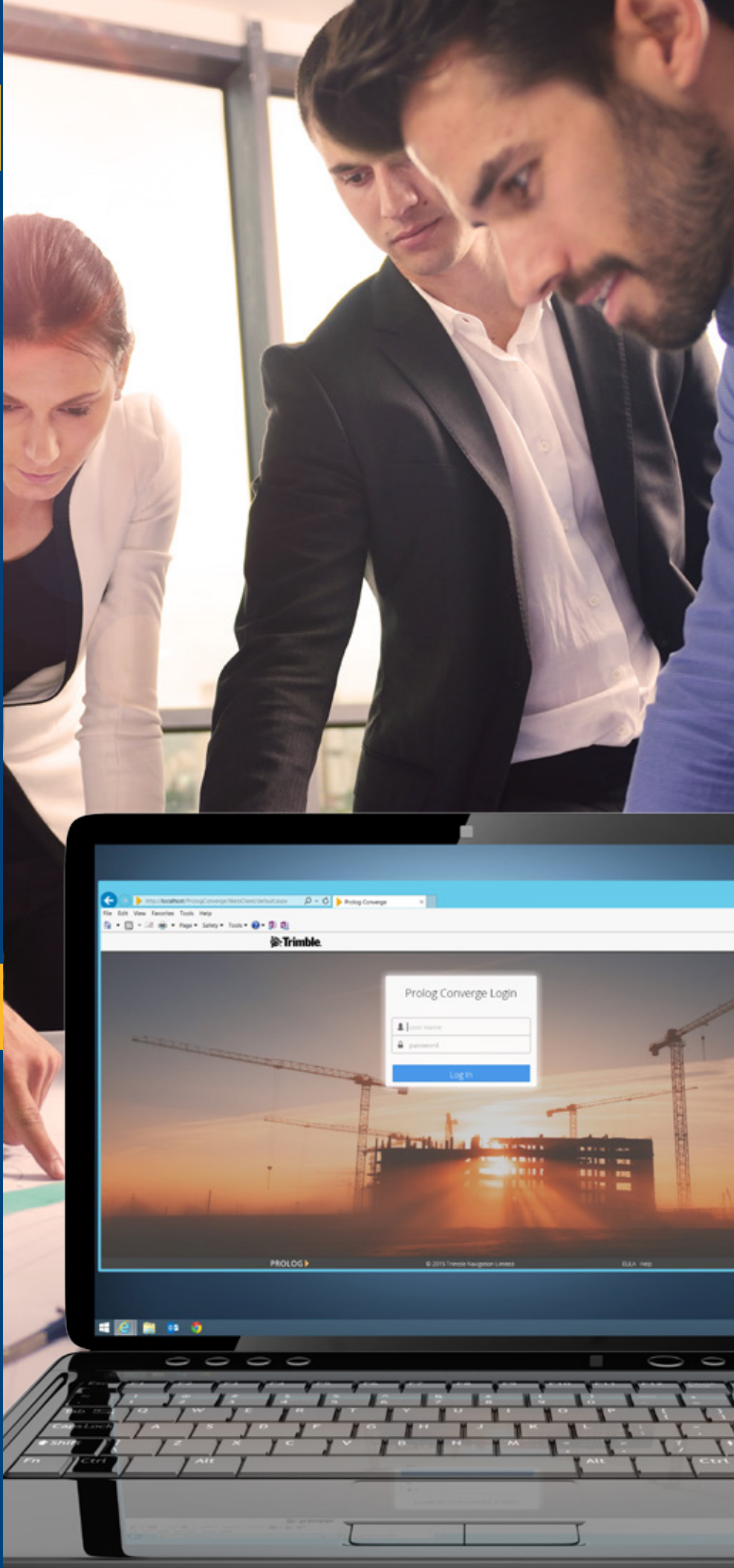
ABOUT BUILDINGPOINT

BuildingPoint is the construction industry's leading technology provider dedicated to offering customized and comprehensive solutions throughout the entire Design-Build-Operate lifecycle. With more than 70 years of combined experience in building construction and technology, BuildingPoint provides the insight, tools, software solutions, and services that forward-looking industry professionals require to grow their business and enhance their productivity.

Founded in 2014, BuildingPoint Florida is built upon the concept that great people do great work. As a result of this belief, the company has grown throughout the state of Florida to bring these comprehensive and creative solutions to the building construction industry. With headquarters in Tampa, and team members throughout the state, BuildingPoint is perfectly aligned to provide the service and support contractors would expect from the Trimble distribution network.

ABOUT TRIMBLE BUILDINGS

Trimble Buildings, a part of Trimble's Engineering and Construction segment, is a world leader in solutions that optimize the complete Design-Build-Operate (DBO) lifecycle of buildings. Incorporating the Trimble Connect collaboration platform and spanning top brands such as SketchUp, Tekla, Gehry Technologies, Proliance, Vico Office, WinEst, Accubid, Manhattan Software, and more, Trimble's product and professional service offerings improve productivity, visibility and data interoperability, from simulation to renovation. Used in over 150 countries around the world and supported by a global dealer and distribution partner network, Trimble technology is a mainstay of the building industry. Information on Trimble Buildings' DBO portfolio is available at: <http://buildings.trimble.com>.

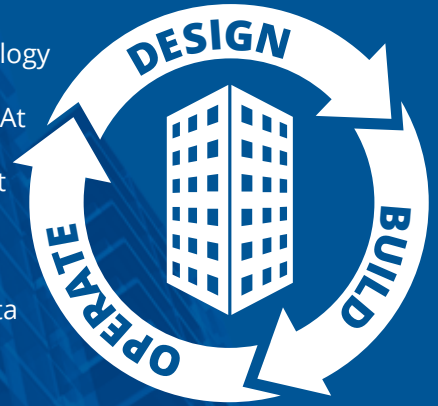


YOUR SOURCE FOR CONSTRUCTION TECHNOLOGY

Beginning at pre-visualization and design through project handover and facilities management, BuildingPoint will help you build and implement a technology roadmap that actually makes sense to your organization.

For too long, contractors and stakeholders have lacked a true construction technology partner. Technology products and solutions are often implemented slowly or insufficiently, resulting in a lack of integration throughout the entire organization. At BuildingPoint, we recognize and understand that your business is unique. That is precisely why we provide a completely customized set of technology solutions that can be tailored to your specific workflow and business processes.

The best data in the world is only effective and usable if it is actionable. With BuildingPoint, you gain a partner who is dedicated to helping you leverage this data to provide real-world answers to both field and office users.



TECHNOLOGY AS EASY AS 1,2,3.

1.PLAN.

The success of any project is often traced back to the planning phase. From traditional 2D cost estimating and take-offs, to robust 3D cost planning and scheduling solutions, to intuitive design tools, BuildingPoint can help you build a reliable and efficient cost planning workflow.

2.PERFORM.

When planning switches to production, BuildingPoint offers a variety of hardware and software solutions that can enhance the oversight and management functions on projects of all shapes and sizes. By bridging the historical gap between office and field relationships, contractors can easily communicate through field-related issues on a real-time basis, drastically reducing the RFI and corrective process workflow.

3.SUCCEED.

While planning and execution serve as key components to a successful and profitable project, the reality of building construction is that change is constant. Adapting and adjusting to the constantly moving variables on the modern jobsite becomes increasingly important as projects become more complex and constrained. BuildingPoint understands this, and provides a team of industry veterans and technology solutions to help you make real-time decisions more effectively, enhancing your responsiveness and ability to deal with changes as they arrive.



THE BUILDINGPOINT DIFFERENCE

Your business is unique. So is BuildingPoint. By focusing exclusively on the building construction industry, BuildingPoint is dedicated to helping contractors and construction stakeholders succeed through the successful implementation of advanced technology. In addition to Trimble's world-class construction solutions, contractors can take advantage of a number of offerings and capabilities that are truly unique to BuildingPoint clients.

LOCAL, CUSTOMIZED SUPPORT

When questions or unexpected challenges arise, you want a partner that can help you find the answers you're looking for. Because BuildingPoint is based in Florida, our solution and support specialists are never far away. Phone calls and emails can only go so far. Your BuildingPoint support team is dedicated to providing on-the-ground, on-demand technical support for both scheduled training and unexpected questions that can and will arise on the jobsite. This commitment greatly enhances both field and office buy-in, and greatly enhances the adoption and uptake with these exciting new technology solutions.

In addition, the BuildingPoint team has real-world industry experience. From design and pre-construction, field operations, through project controls and management, the BuildingPoint team understands your industry and your needs at a very deep level. This expertise offers a unique capability that is simply unmatched in the construction market. With decades of construction experience, BuildingPoint offers a level of professionalism and insight that will minimize the uncertainty surrounding new and emerging technologies or workflows.



CERTIFIED TRAINING

Technology solutions are only as good as the training that is provided. Effective training and implementation is the number one priority for BuildingPoint. With Trimble Certified Trainers on staff, you can rest assured that your users will be receiving the most professional and comprehensive training available anywhere within the construction industry. More than just button presses and clicks, BuildingPoint focuses on real-world application and role-based training. This methodology ensures that users learn the important skills and insight they need to be more productive and efficient through the use of technology solutions from BuildingPoint.

REALIZE YOUR VISION

TRIMBLE CONNECT & TRIMBLE SKETCHUP

Bringing concept to reality. That is the most basic description of a contractor's responsibility each and every day. With Trimble's suite of design and visualization tools, you can quickly and easily understand the context and scope of any construction project, or compare that design with the existing conditions. Trimble SketchUp is recognized the world over for its ease of use and accessibility, allowing users of varying design and graphical experience to quickly mock-up structural or design concepts and proofs of concept. More than just a CAD tool, SketchUp seamlessly interacts with Trimble's suite of building construction solutions, bringing powerfully simple drawing and modeling tools to applications as varied as laser scanning and project collaboration.



For contractors and construction stakeholders this visualization capability represents a tremendous opportunity to leverage existing data sets and models to create compelling 3D environments that accurately reflect the conditions on the ground. With geo-referenced overlays, users have the ability to quickly and easily mock-up project footprints and basic designs to ensure that design constraints are being respected and prospective work is feasible.

Once you have your model, Trimble Connect allows you the ability to share and collaborate with colleagues both within and outside of your organization, further enhancing the communication cycle. As a cloud-based platform, Trimble Connect bridges the gap between traditionally siloed project responsibilities including design, construction and ownership. This powerful tool helps you spend less time waiting for answers and more time building.

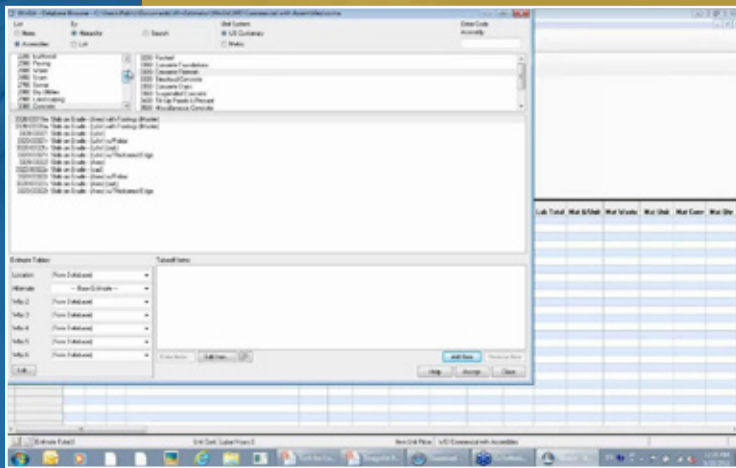
BUILT FOR CONSTRUCTION DESIGN

Construction has a number of unique challenges. Trimble recognizes these challenges and understands that you need a collaboration platform that is built for, and built around, the construction process. With Trimble Connect, you have an end-to-end solution that was created from the ground up to provide designers, contractors, and owners with a common platform with which to manage the project lifecycle. From model and plan markup to revisions and task management, Trimble Connect represents the next generation in construction workflow enhancements.



BECAUSE ACCURACY COUNTS

BuildingPoint offers the industry's most wide-ranging and comprehensive portfolio of cost-planning solutions for contractors and pre-construction specialists. Regardless of whether you're working from 2D plans, 3D models, or a blend of the two, Trimble's estimating and take-off tools embody the experience and construction-focused tool set you would expect from the industry's building construction leader.



TAKEOFFS & ACTUALS

Traditional estimating takeoffs remain a necessity within the cost planning workflow. Today there are numerous takeoff applications that offer the ability to drive quantity and material counts from traditional 2D plans. With WinEst, BuildingPoint offers a next-generation approach to takeoffs, by leveraging the power of assemblies and libraries to help you finish your bids more quickly and more accurately. In addition to traditional takeoffs, WinEst offers a seamless integration with both Vico Office and Trimble Prolog, substantially reducing the amount of data entry and redundant work required with more traditional takeoff solutions. With WinEst, your cost planning work can flow directly from pre-construction through production and ultimately close out. Additionally, WinEst thrives in both single and multi-user environments, allowing you to collaborate in real-time with colleagues on larger projects.

HISTORICAL COST PLANNING

One of the greatest resources a contractor relies upon for bidding and estimating future projects is previous work. This historical data represents a goldmine of cost planning data that, when used properly, can inform and shape the construction process. Historical cost models can also help to identify core competencies and data trends that would otherwise be left undiscovered and underutilized. With Trimble Modelogix, you can easily harness this historical data to gain insight into future projects through the use of this existing data. Based on an intuitive spreadsheet based workflow, Modelogix transforms your mountains of budget and account data into a set of actionable and reportable data that can be sliced and diced to help create future cost models and budgeting metrics that help produce more accurate forecasts on future work.



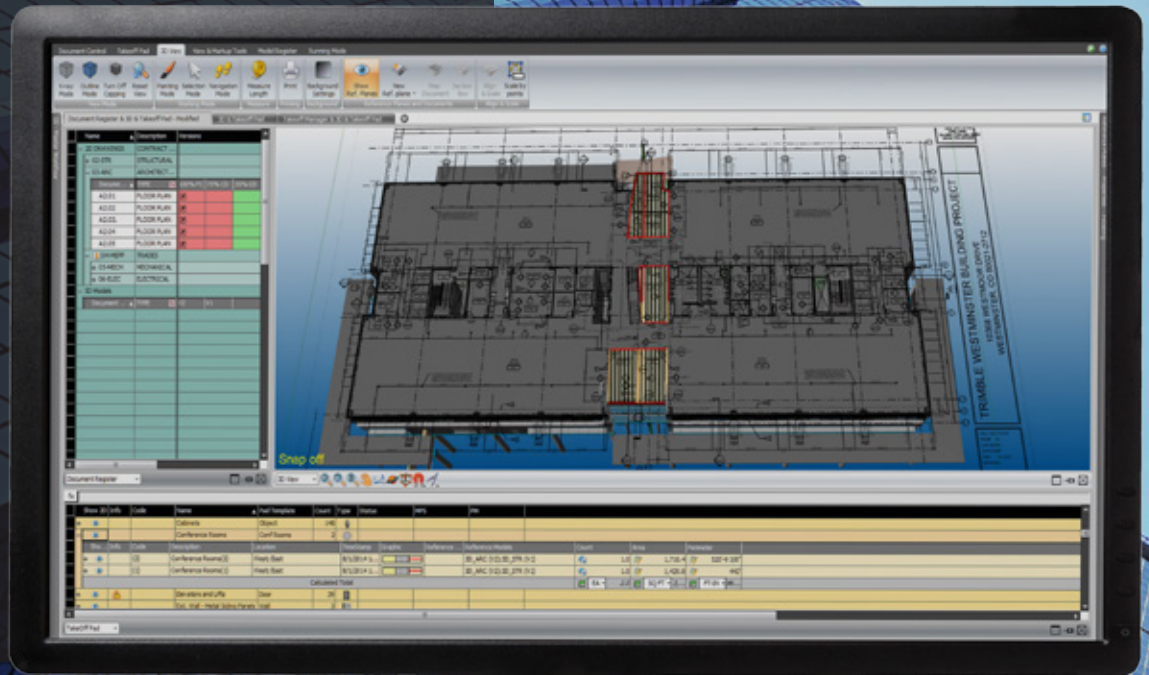
WE'VE GOT A LIBRARY FOR THAT

Building assemblies is a cumbersome and time consuming task. That's why Trimble has created hundreds of preconfigured libraries and assemblies. These various libraries can be custom tailored to your specific needs, and can even utilize existing assembly subscriptions you might already have.

VIRTUAL DESIGN & CONSTRUCTION

BUILD YOUR PROJECT, BEFORE YOU BUILD IT

With VDC and BIM concepts finally reaching a critical mass within the construction industry, contractors need a toolkit that can leverage these technologies and bring the benefits to projects of all scopes and sizes. Trimble remains on the forefront of the Virtual Design & Construction workflow with the industry's most comprehensive, construction-centric VDC suite, Vico Office. With Trimble Vico Office, construction users have a robust solution that has been optimized for today's quick moving construction environment. From document control and revision management, schedule planning, to complete constructible model management, Vico Office puts the power of BIM into your hands. And because Vico Office is part of the Trimble portfolio, you can easily integrate this solution into your estimating and pre-construction workflow as well. Vico easily communicates and integrates with Trimble WinEst, giving you the power and flexibility to easily perform estimates and takeoffs using 2D plans or 3D models, or a combination of the two.



MODEL BASED CONSTRUCTION

With Vico Office, building owners and general contractors can collaborate efficiently, manage costs, and optimize schedules on complex building projects. Vico Office is designed as a tightly integrated, BIM-neutral platform to which multiple types of BIM models can be published, synthesized, and augmented with cost and schedule information. By creating a 5D BIM model which incorporates design, estimating data, and scheduling data, a live model is created that is dynamic and responds immediately to changes in the design and on site. Vico Office is structured in a modular way, allowing users to maximize efficiency and meet the needs of all construction process trades and phases. It's a tailored, yet expandable solution, packaged in a consistent and easy to use environment.

The Vico Office modules support the various functions involved in a BIM project and provide for each function distinct, yet integrated, modules for exploring, planning, controlling, and managing the construction process. Each added module leverages the data, further increasing BIM process efficiency. Vico Office's unified structure perfectly matches the Integrated Project Delivery methodology and enables a truly beneficial social-BIM environment.

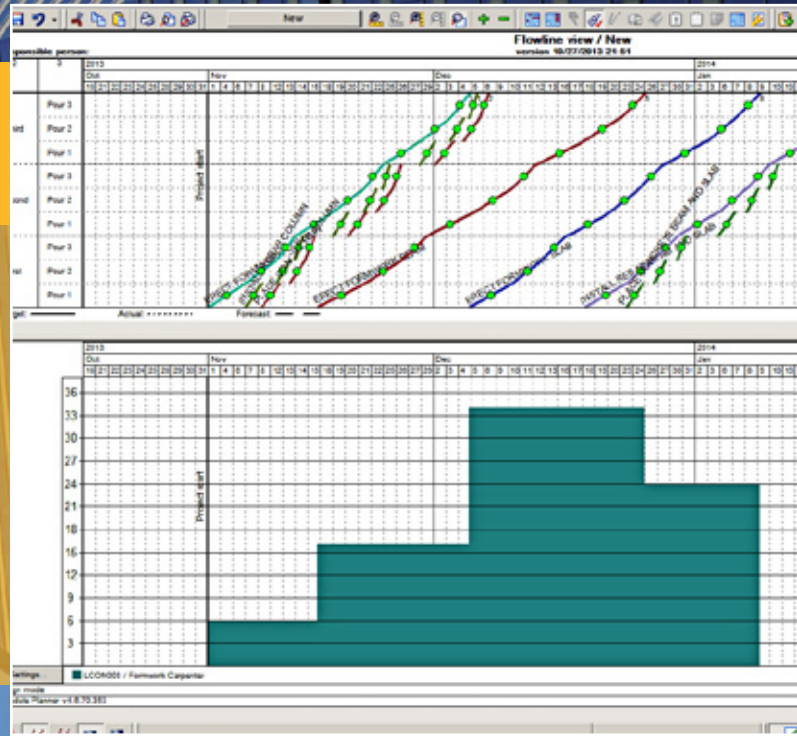
Whether you need location based scheduling, clash detection and coordination tools, cost estimation, or custom reporting, the module based design of Vico Office gives you ultimate customization to meet your needs.

Vico Doc Controller

Available as either a standalone solution, or within the Vico Office Suite, Document Controller represents the standard for construction drawing management. With a set of intuitive and powerful tools, Document Controller can help you to better manage incoming revisions and changes, while also providing insightful reporting of changes and design impacts. With this solution, you can manage all of your construction documents in one centralized location, determine the overall impact of those changes, and even map those changes back to your original master model. With Document Controller, you can finally gain control of your construction drawings and documents.

WHAT IS FLOWLINE SCHEDULING?

Every construction project is guided by a schedule. These schedules determine the pace and expectations for events and milestones that lie months and even years into the future, and provide a single baseline with which to gauge success and project progression. In nearly every case, contractors utilize complex Gantt charts to visually display these tasks and milestones. Trimble's Vico Suite utilizes Flowline Scheduling to present a different perspective on the scheduling process. With Flowline, users can quickly identify resource shortages and timing discrepancies that can ultimately derail even the most detailed scheduling plans. When used in conjunction with a traditional Gantt chart, Flowline offers a visual representation of resource utilization that can greatly enhance project and timeline efficiency.



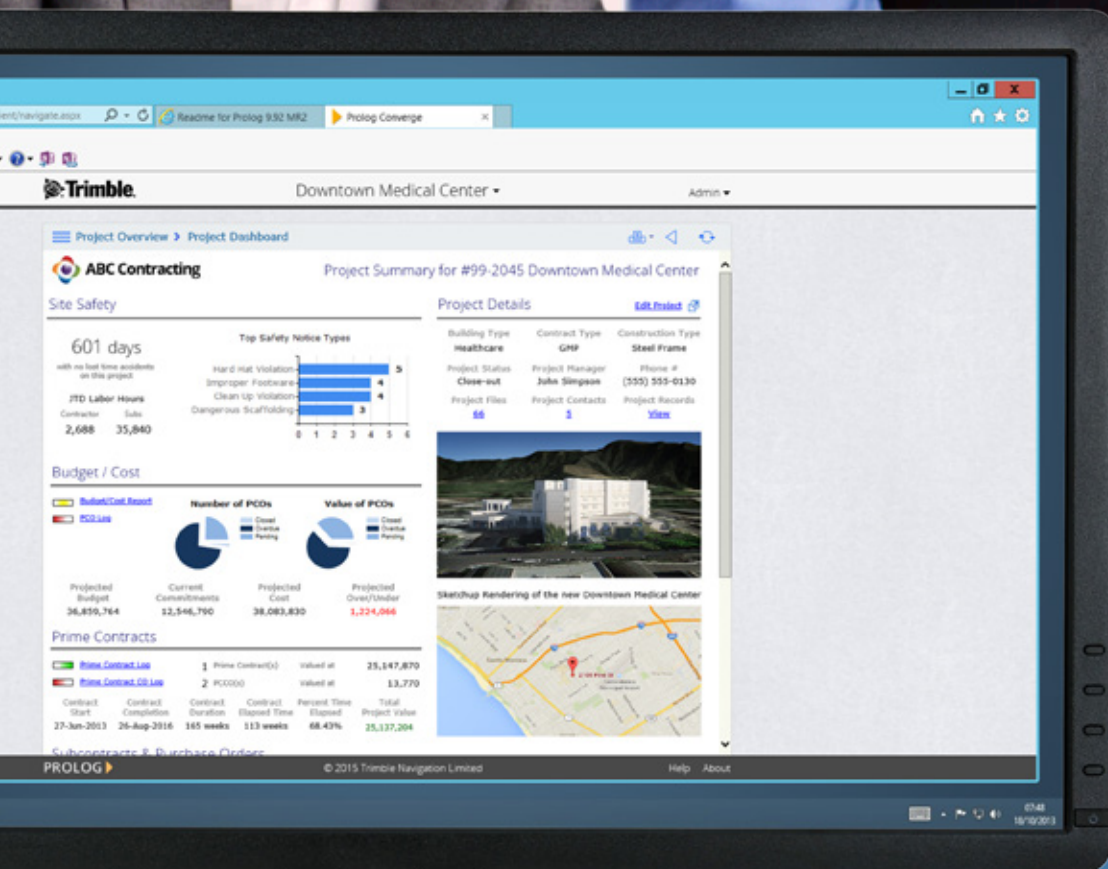
GET MORE FROM YOUR MODEL WITH OUR VDC SERVICES.

BuildingPoint offers a complete portfolio of VDC Services tailored to today's contractors. So much more than just an outsourcing team, BuildingPoint provides both comprehensive VDC modeling services and a consultative experience that can help you expand the functionality of your model. While the BIM workflow has certainly become more productive and accessible over the past several years, the team of VDC experts at BuildingPoint will help extend your model's usefulness as far downstream the construction cycle as your needs require. This consultative approach can take any number of forms, from generating models from 2D documents or existing condition point clouds to model coordination to constructibility analysis to BIM driven project schedules. With BuildingPoint, you have a VDC partner that you can trust to help make your model more reliable, viable and constructible.



MANAGE YOUR PROJECTS WITH TRIMBLE PROLOG

Trimble Prolog represents the gold standard for project controls software. For over 20 years Prolog has managed some of the largest and most complex projects in the world. The reasoning behind this success is simple; Trimble Prolog works the same way that contractors do. By understanding the construction process at both the executive, accounting, and field management levels, Trimble Prolog is able to mesh and integrate with contractors of any size. Prolog provides you with a central and singular solution that covers the entire construction management process. From drawings and file management, to budgeting and cost controls, to purchasing, to field administration and project closeout, Trimble Prolog has built a refined and unmatched tool set with which you can easily interact and manage your construction projects.



REPORTING THAT MATTERS

Trimble understands that your success is largely based upon solid and reliable reporting. Whether reporting to executives, owners, architects, or any number of project stakeholders, Trimble Prolog offers the most robust and customizable reporting interface available in the project controls workspace. This customizable reporting engine allows you to create insightful and relevant reports that are then available at the press of a button. Additionally, Prolog features a powerful notification and messaging system that can automatically send out up-to-the-minute reports at any interval or time you desire. With Prolog, you possess a truly powerful reporting platform that can add the data and context you need to make educated decisions, more quickly.

CUSTOMIZED FOR YOUR BUSINESS

BuildingPoint is here to provide a customized and custom-tailored Prolog experience to your organization. By taking the time to understand the process and workflows within your specific organization, BuildingPoint's team of Trimble Certified Professionals will then create a truly unique approach and implementation that will reflect the way you already work. This customized approach is possible because of Prolog's unique architecture, which is built to be customizable and scalable, while also providing the consistency and reliability you would expect from the industry leader in project controls solutions.



Prolog Manager

As a client-based platform, Prolog Manager provides a traditional software interface for administrators and office power users. This application-based solution is perfect for users manipulating large data sets and budgetary tasks. Prolog Manager is also perfectly suited to long-term Prolog users, familiar with a more traditional windows-based user experience.



Prolog Converge

Prolog Converge is the next generation of Prolog connectivity. This module is accessed through a traditional web-browser, and enables the user to connect and utilize Prolog from anywhere in the world, with an internet connection. Prolog Converge is fully-featured, and also provides an insightful dashboard and additional visual elements that allow users to quickly access the project data they're looking for.



Prolog Mobile

For mobile and tablet users, Prolog Mobile brings the power of Prolog to field managers and supervisors. With Prolog Mobile, you can quickly sync your data when you have an internet connection, and then continue to work throughout the day offline. Data and daily work can then be synced up at the end of the shift or when data connectivity returns. This powerful capability puts the project controls data you need, right into your hand.

GAIN WORKFORCE INSIGHT.

Workforce management represents the next frontier in effective project controls. Trimble CrewSight is an end-to-end workforce management platform that helps contractors understand exactly what is happening on their project at any point in time. With CrewSight, you can easily build a customized management system for the unique requirements and prerequisites on each specific job. Whether you require access control and hard entry locations, to safety compliance and even emergency notifications, Trimble CrewSight offers a platform to manage your workforce. As a part of the Trimble Buildings portfolio, CrewSight seamlessly integrates with Trimble Prolog. This integration allows real-time reporting and automated updates of field management and daily work journals, greatly increasing reporting accuracy and turnaround.





©2015 BuildingPoint Florida. All Rights Reserved.
813-280-0655 www.buildingpointflorida.com