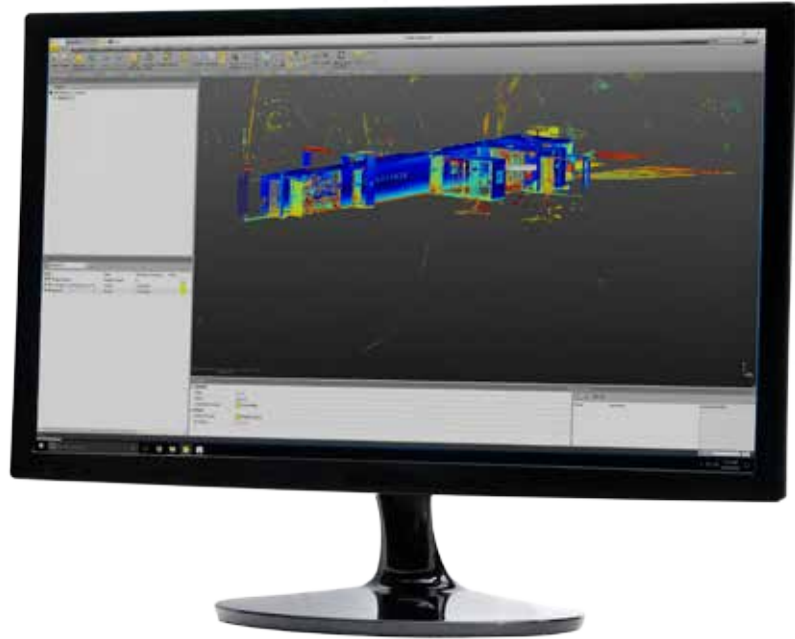


# SPATIAL SCANNING

## Post Processing

A large advantage of spatial scanning and mapping technologies revolves around the ability to quickly and easily measure and quantify large and potentially complex spaces in a very short time period. Utilizing BuildingPoint's unique spatial scanning technique, tools, and methodology building stakeholders can receive insightful, accurate, and comprehensive point cloud data in a fraction of the time typically afforded for registering and processing laser scanning data sets. This equates into less time wrangling data, and more time analyzing and making decisions.



## HOW IT WORKS

BuildingPoint's dedicated server network has been specifically optimized for the large data sets and file sizes presented by a large-scale spatial scanning scope. Leveraging fiber optic disk networks and a number of redundant high-speed storage arrays, BuildingPoint can post-process even the largest of scanning projects.

## DELIVERABLES

Post-processing deliverables include: point cloud registration and colorization, Autodesk Recap Preparation & Indexing, Panoramic Image Stitching, and even online hosting services to help push data sets to the cloud for collaboration using Trimble Connect.

## GETTING STARTED WITH POST PROCESSING

BuildingPoint can process files and data sets originated from both your scanning workflow or ours. This allows you to take advantage of our powerful computer and network resources to post-process your existing data sets, or expand the scope within the traditional BuildingPoint scope of work.

To learn more about Spatial Scanning, and post processing services, contact your local BuildingPoint representative, or visit us online at [www.buildingpointflorida.com/spatialscanning](http://www.buildingpointflorida.com/spatialscanning)



[www.BuildingPointFlorida.com](http://www.BuildingPointFlorida.com) 813-280-0655

16242 North Florida Avenue Lutz, FL 33549