

# BUILDINGPOINT CLIENT CASE STUDY

APG Electric



# THE APG STORY

---

APG Electric, a leading electrical contractor, specializes in large-scale commercial projects, including hospitals, schools, warehouses, and high-end resorts. We recently met with John Lenges, Field Engineer for APG Electric, who oversees Trimble construction technology within the company. With 22 years at APG and five years of experience using Trimble RTS for layout, John has seen firsthand how this technology has transformed their workflow.

## EMBRACING TRIMBLE

APG prides itself on precision, and the Trimble RTS has been instrumental in upholding their motto. "As long as the RTS is set up correctly, it's spot on," John explains. The system eliminates the guesswork and manual calculations associated with conventional string and protractor methods, ensuring high accuracy.

### SPEED & ACCURACY

With the RTS, layout time was drastically reduced, allowing more time for rough-in and ensuring work stayed on schedule.

### PRECISION LAYOUT OF CURVED WALLS

Trimble FieldLink eliminated the challenges of traditional measurement techniques on radius walls.

### CONFIDENCE IN PLACEMENT

The RTS & FieldLink provided assurance that layout points were precisely where they needed to be.

### ENHANCED COORDINATION

The Trimble workflow enabled APG to work ahead of framing, improving project workflow and efficiency.



# OPAL SANDS

## PROJECT HIGHLIGHT

.....

The Opal Sands project had a tight deadline and required each trade to layout and rough in each floor within a week. For APG, this meant layout needed to be completed in just one day per floor. John was able to layout approximately 400 points per floor—covering hangers, sleeves, and penetrations—in just half a day using the Trimble RTS. In contrast, John mentioned that traditional methods would have required a two-person team working for three days per floor, significantly eating into rough-in time. Using the Trimble RTS, John was able to layout in ½ a day which allowed the APG team to have additional time to complete the rough in stage for each floor and still remain on schedule

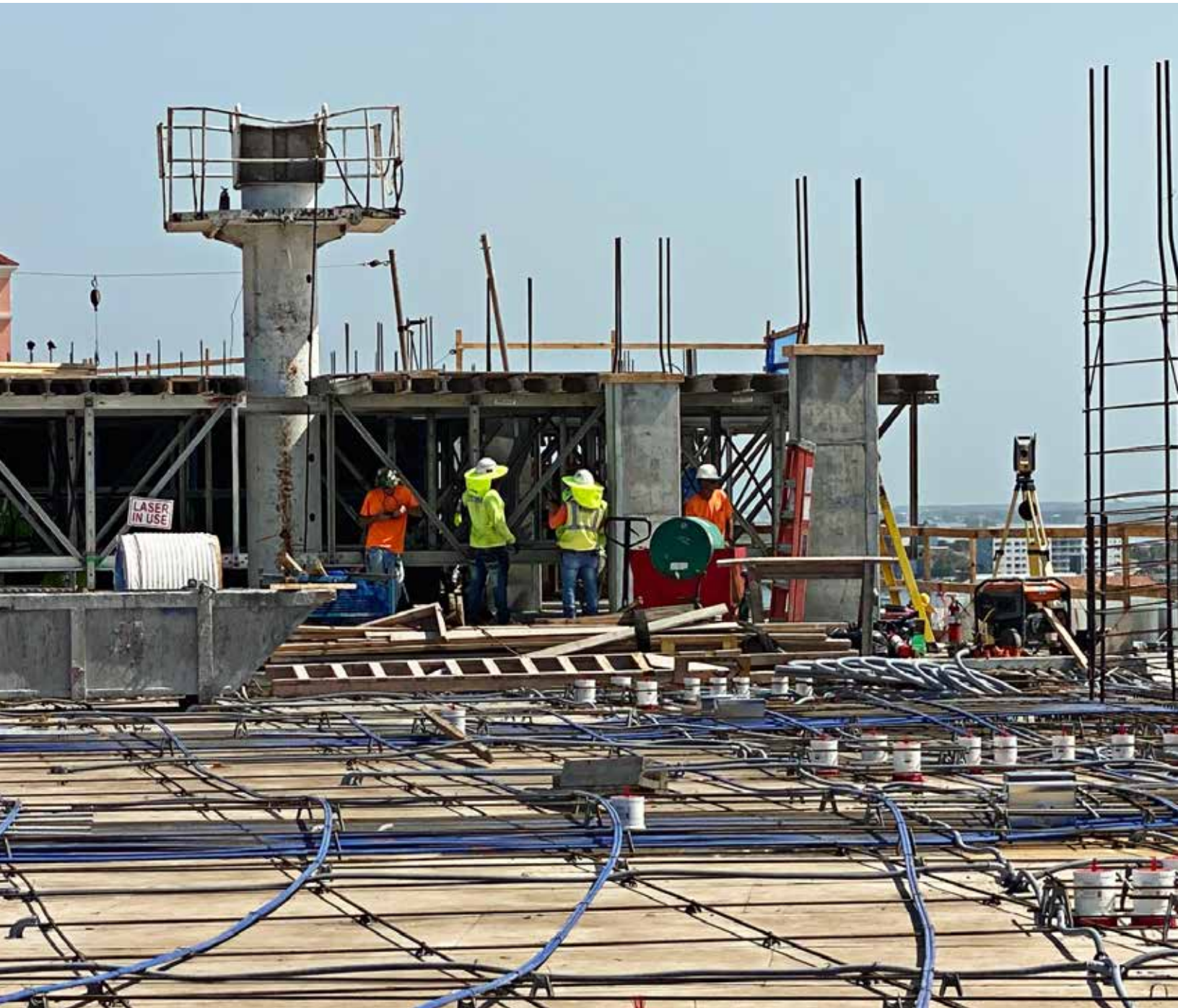
A key advantage of the RTS was the ability to conduct quick quality control (QC) checks. “Once the team completed the rough-in, I could go back through with the RTS and perform a QC check in about two hours. If something was off, I was able to collect a new point using Trimble FieldLink software and update our as-builts accordingly,” John adds.

One of the standout features of the Opal Sands project was the suspended light ceiling in the main lobby and over 400 can lights in the ballrooms—installed in a curved pattern. The RTS allowed APG to lay out these points before framing even began.. “We were able to run our conduit and rough-in before any framing was done. Once framed, all the installer had to do was shoot a laser up and install the can light in its exact position.” This allowed the framing contractor and APG to install the ballroom lighting in a quicker timeframe.



# EXPANDING TRIMBLE USE

APG Electric is committed to utilizing Trimble RTS on all future building projects. They have also begun integrating Trimble GNSS systems for layout on large warehouse projects. By leveraging Trimble's advanced layout solutions, APG Electric continues to uphold its reputation for accuracy, efficiency, and getting it right the first time. The use of the Trimble RTS has not only streamlined their workflow but also allowed them to take on complex projects with confidence, knowing that they have the right tools to achieve precision and efficiency.



©2025 BuildingPoint Florida. All Rights Reserved.  
813-280-0655 [www.buildingpointflorida.com](http://www.buildingpointflorida.com)